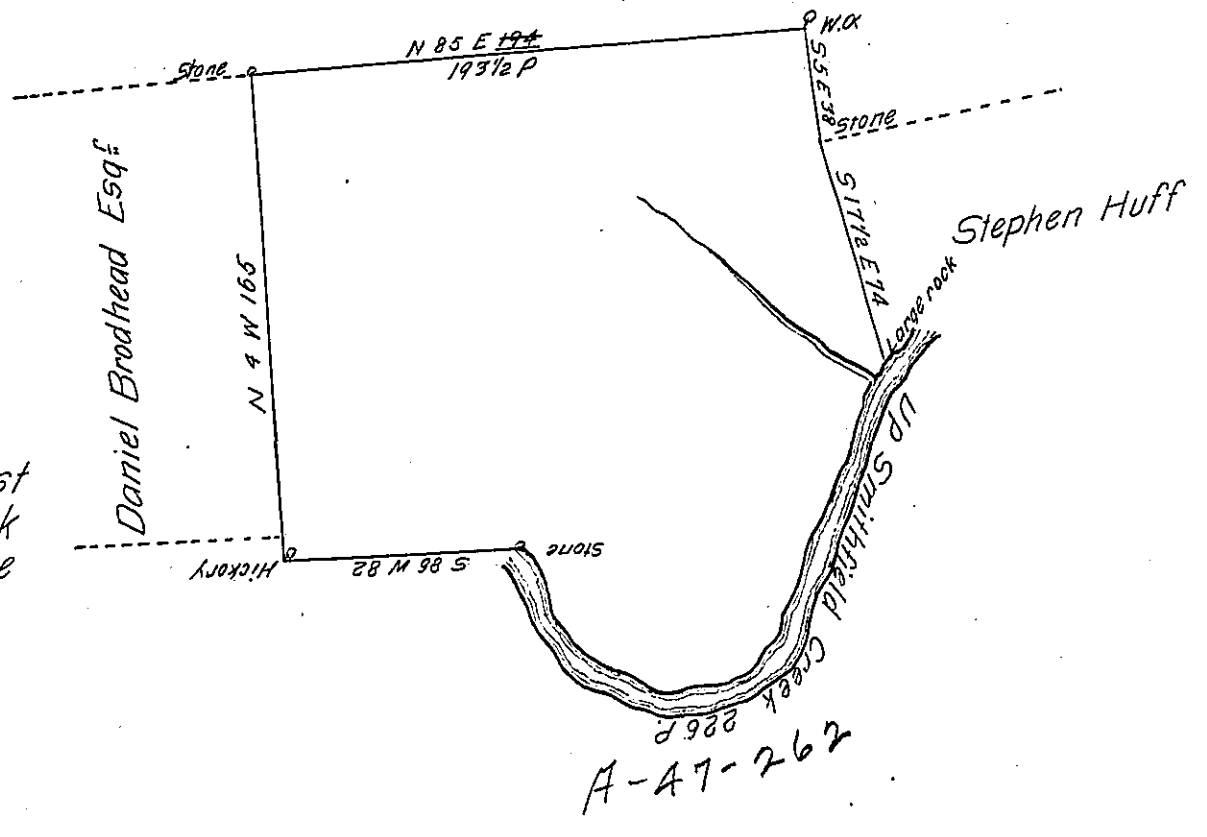


William Smith Esq<sup>s</sup>



The bearing & dist  
up Smithfield Creek  
from the Rock to the  
Stone are—  
1. S 20 W. 112  
2. S 71. W. 40  
3 N 61 W 38  
4 N 26 W 36  
226

By Virtue of a Warrant dated the 9<sup>th</sup> March 1790 Surveyed the 31 March 1790 to David Dills the above described tract of land Situate on the North Side of Smithfield Creek about a mile & an half from Delaware River in Lower Smithfield Township Northampton County Containing two hundred and ninteen Acres & the Allowance of Six P Cent &c.

Daniel Brodhead Esquire  
Survey<sup>r</sup> General

R. Geo. Palmer

IN TESTIMONY that the above is a copy of the original remaining on file in the Department of Internal Affairs of Pennsylvania, made conformably to an Act of Assembly approved the 16th day of February, 1833, I have hereunto set my Hand and caused the Seal of said Department to be affixed at Harrisburg, this eighth day of August 1904

*Loac D. Perry*  
Secretary of Internal Affairs.